

# Alovet

## Alovision LiC 200

Automatic Chemistry Analyzer



### • Compact

Carry-on baggage size

### • Precise

End point CV  $\leq 0.5\%$ ; kinetic CV  $\leq 1\%$

Two-Point CV  $\leq 1.5\%$ ; Turbimetric method CV  $\leq 1\%$

### • Reliable

Lower failure rate : Easy maintenance

### • comprehensive

- LIS; Barcode
- Water cycle cooling
- Auto warm water washing
- Immunology items
- Powerful software

### Compact Size

- ▼ Carry-on baggage size
- ▼ Light, easy to carry

### High throughput

- ▼ condtant 200 T/H
- ▼ 200T/H for Double reagent test
- ▼ Fast to be ready for startup

### All-in-one Design

- ▼ Barcode for sample and reagent
- ▼ Water cycling cooling,warm water washing
- ▼ Turbimetric test for immunology items
- ▼ Liquid detection and collision protection

### Strong Stability

- ▼ optimized system with stable running,no drift
- ▼ stable optical system, efficient washing system
- ▼ & accurate sampling system
- ▼ stable circuitry system and liquid path

### Friendly software

- ▼ Easy to operate, customerized settings
- ▼ compatible with different windows & LIS
- ▼ Dirty cuvette auto detection
- ▼ Auto dilution for high concentration sample
- ▼ Auto diluent for multi-calibration

### Cost Effective

- ▼ Affordable price for analyzer
- ▼ Economical spare parts and consumables
- ▼ High performance open reagent system

### Excellent Performance

- ▼ End point CV  $\leq 0.5\%$
- ▼ Kinetic CV  $\leq 1\%$
- ▼ Two-point CV  $\leq 1.5\%$
- ▼ Turbimetric method  $\leq 2\%$

### Design

- ▼ Italian fashionable design
- ▼ Europe quality standard
- ▼ Made in china



Beta Lab Group

**Alovet** ALOVET Co.,Ltd.

Add:No.99 Jinji Lake Avenue, Suzhou Industrial Park, Suzhou City,  
Jiangsu Province, P.R.China

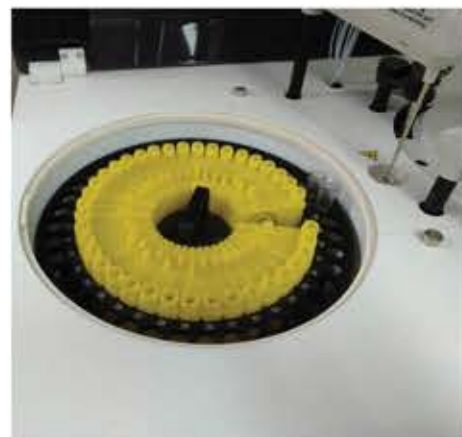
E-mail:info@alovet.com.cn Tel: +86 512-6856-3892 P.C.:215000

For more information about our products or services,  
please contact our technical support line

24h online  
400-800-2436

## Instrument Specification

<b>Principle</b>	Photoelectric colorimetry
<b>Assay Method</b>	End Point, Kinetic , Two Point etc.
<b>Throughput</b>	Constsnt 200 T/H
<b>STAT Function</b>	Specific emergency positions



## Reagent / Sample Probe

<b>Reagent Probe</b>	High-polished probe,automatical liquid level detection and tracing, collision protection
<b>Sample Probe</b>	High-polished probe,automatical liquid level detection and tracing, collision protection, 2-50µl increment.



## Reagent / Sample System

<b>Reagent Disk</b>	40 reagent position,supporting different types of bottles.
<b>Cooling System</b>	2-8 °C 24h non-stop cooling system
<b>Sample Disk</b>	40 sample positions include standard,QC,STAT position.



## Optical System

<b>Light Source</b>	Halogen-Tungsten lamp with long life, 12V,20W
<b>Photometry Range</b>	0-4.0Abs
<b>Wavelength</b>	9 wavelengths (300nm-700nm)



## Reaction System

<b>Reaction Cuvett</b>	60 reusable reaction cuvettes
<b>Washing System</b>	7 step warm water washing
<b>Minimum Reaction volume</b>	180 µ
<b>Heating System</b>	37± 0.1 °C

## Others

<b>Dimension</b>	415mm(W) *565mm(L)*385mm(H)
<b>Weight</b>	28kg
<b>Water consumption</b>	<4L/H

